

UPGRADE YOUR TIGRES WITH THE ROPE KIT

Installation Manual

Product Code:

636566 - Rope Kit for Tigres 8 ISO-5/16" HT

636616 - Rope Kit for Tigres 10 ISO-3/8" HT

Please read carefully the following manual with instructions to help you install successfully the rope kit on your TIGRES windlass.

Included in Package:

- ✓ Screw socket head 8x45 (x2)
- ✓ Screw socket head 5x30 (x2)
- ✓ Screw socket head 4x16
- ✓ Spring
- ✓ Body
- ✓ Finger
- ✓ Stripper
- ✓ Finger Pin
- ✓ Gypsy
- ✓ Internal Cone Clutch

Tools Required:

- ✓ 3mm (1/8") Allen key
- ✓ 6mm (15/64") Allen key
- ✓ 13mm (1/2") wrench-key
- ✓ 17mm (5/8") wrench key

Optional Equipment (not included in package):

- ✓ Magnet for chain counter (ref. 04240)
- ✓ Sensor for chain counter (ref. 04241)



Make sure the anchor windlass is not powered before carrying out manual interventions.



Secure your chain before carrying out manual interventions on a fixed point on-board (e.g. a cleat or a bollard).

DISASSEMBLY OF THE STOCK PARTS

1



2

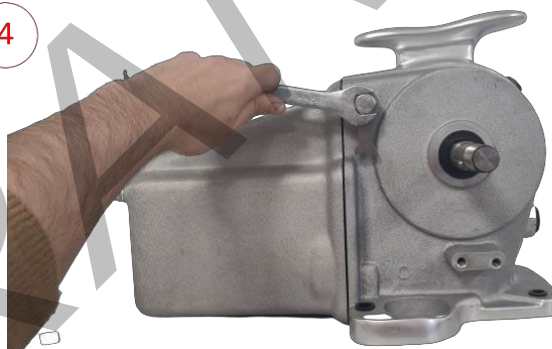


Remove the stripper by unscrewing the two M8 screws.

3



4



Unscrew and remove the tripod, along with the outer cone clutch, gypsy and internal cone clutch. Keep the tripod and outer cone clutch aside, they will be required later.

Remove the pawl by unscrewing the M10 screw. Keep everything aside, they will be required later.

5

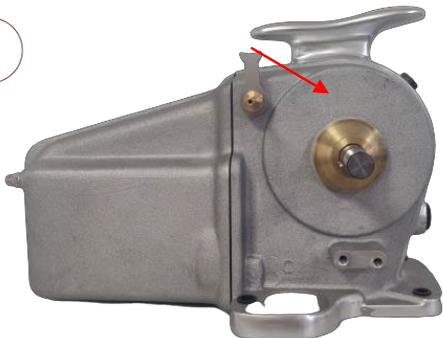


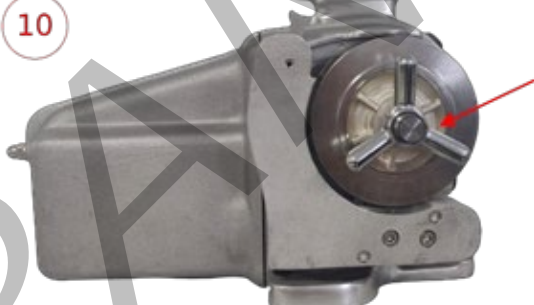




6



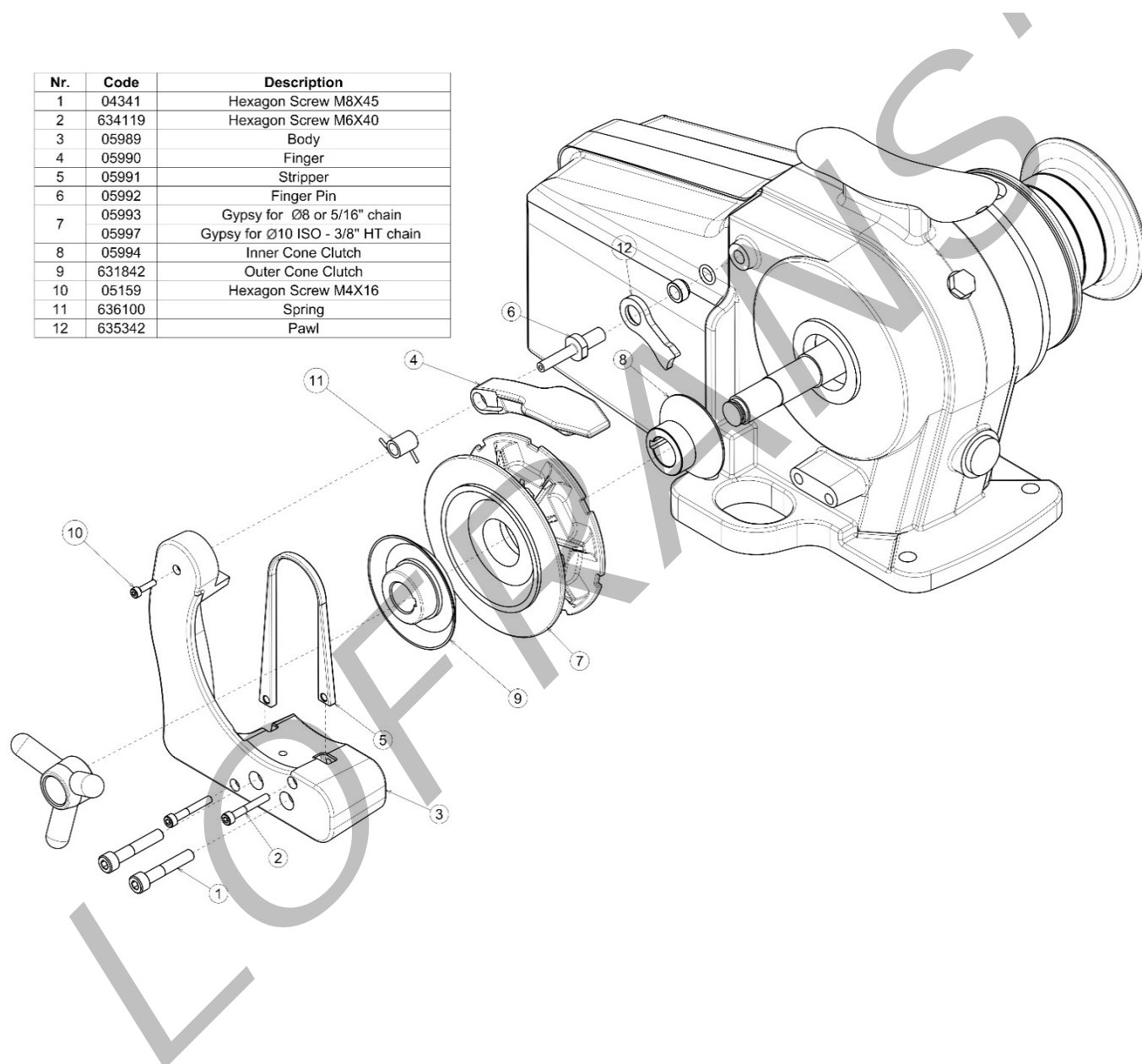
Place the rope kit's inner cone clutch on the shaft. It is advised to use yellow marine grease on the cone clutch surface that is in contact with the gypsy.

Pass one by one, all the parts from step 4 on the rope kit's brass pin, with the above order.

<p>7</p> 	<p>8</p> 
<p>Place the pawl assembly from previous step on the top M10 thread. Tighten it and secure it in place.</p>	<p>Place the complete rope kit assembly on the TIGRES as it came from the package. The sensor for the chain counter can be positioned inside the body (#3) by first passing the cables from the top and then insert the sensor inside the body. Mind that the sensor does not make contact with the rotating gypsy during operation.</p>
<p>9</p> 	<p>10</p> 
<p>Place the two M8 allen screws for the body. Tighten them and secure them in place. The magnet for the chain counter is positioned inside the hole available between the pockets of the gypsy. Fix the magnet in place by using an adhesive for metals (two component epoxy glue) or silicone (the glue used must be able to withstand a marine environment.), the magnet will need to protrude from the hole only 2mm, the protruding part of the magnet must not come in contact with the body (#3) or the sensor during rotation of the gypsy.</p>	<p>Place on the shaft the stock outer cone clutch and the stock tripod. It is advised to use yellow marine grease on the cone clutch surface that is in contact with the gypsy.</p>
<p>11</p> 	<p>12</p> 
<p>Place the M4 allen screw on the top side. Tighten it and secure it in place. Connect the 2 reed sensor wires with the chain counter (if exists).</p>	<p>The installation is complete. Your windlass is now ready for use.</p>

SPARE PARTS LIST

Nr.	Code	Description
1	04341	Hexagon Screw M8X45
2	634119	Hexagon Screw M6X40
3	05989	Body
4	05990	Finger
5	05991	Stripper
6	05992	Finger Pin
7	05993	Gypsy for Ø8 or 5/16" chain
	05997	Gypsy for Ø10 ISO - 3/8" HT chain
8	05994	Inner Cone Clutch
9	631842	Outer Cone Clutch
10	05159	Hexagon Screw M4X16
11	636100	Spring
12	635342	Pawl





Via Philips, 5 - 20052 Monza (MB) (Italy)
www.lofrans.com - e-mail: contact@lofrans.com